

Micron Side Mount Technical Specification

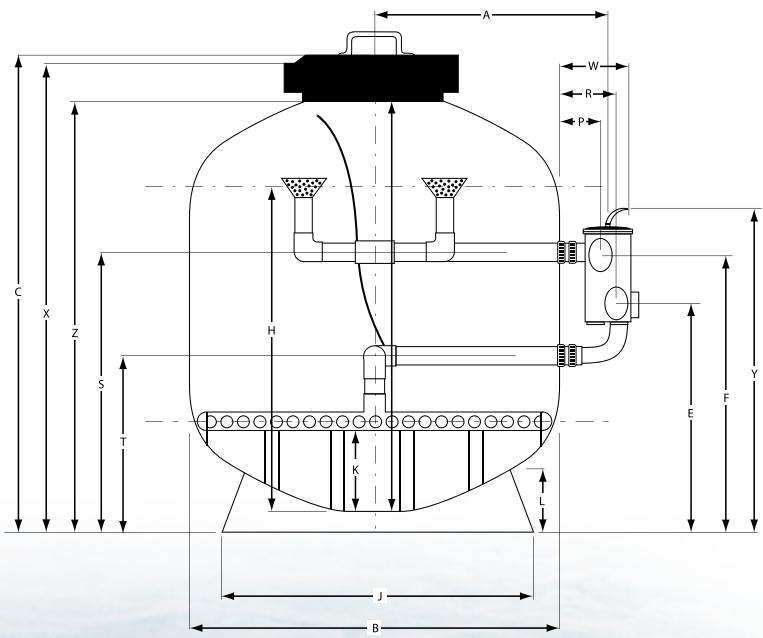
Filter Model	Valve Size (mm)	Inner Diameter (mm)	Filter Area (m²)	Bed Depth (mm)	Max. Flow (lpm)	Max. Pool Size** (litres)	Backwash flowrate (lpm)	Media Volume (litre)	Sand 16/30 (kg)	Zeoplus 1-2.2 (kg)
SM600	40	600	0.28	360	226	81,430	189 - 236	117	170	130
SM750	50	750	0.44	400	353	127,235	295 - 368	199	290	220
SM900	50	900	0.64	440	509	183,218	424 - 510	303	440	330

Residential flow rate based on a velocity of 48m3/hr/m2. Max. pool size is based on a 6 hr turnover.



Micron Top Mount Dimension (mm)

Model	A	B	C	W	R	P	E	F	K	V	H	L	X	Y	Z	J	S	T
SM600	518	622	880	310	215	153	629	684	105	684	601	88	804	825	778	540	520	317
SM750	587	772	993	321	248	178	593	674	113	763	652	120	914	823	892	678	593	390
SM900	667	923	1115	321	248	178	656	737	113	860	750	120	1030	886	1011	678	656	453



WATERCO
Water, the liquid of life

Waterco Limited

Waterco is an Australian public listed company involved in the manufacture and distribution of:

- Pool and spa equipment
- Pool and spa chemicals
- Domestic water filter, softeners and purifiers
- Commercial water treatment equipment



Waterco exports to over 40 countries via branches operating in Australia, New Zealand, Malaysia, China, the United Kingdom, United States of America, Canada and Indonesia as well as through international distributors.



OFFICES - AUSTRALIA
NSW - Sydney (Head Office)
Tel: +61 2 9898 8600
QLD - Brisbane
Tel: +61 7 3299 9900
VIC/TAS - Melbourne
Tel: +61 3 9764 1211
WA - Perth
Tel: +61 8 9273 1900
SA/NT - Adelaide
Tel: +61 8 8244 6000
ACT Distribution
Tel: +61 2 6280 6476

OFFICES - OVERSEAS
Waterco (Europe) Limited
Radfield, Kent, UK
Tel: +44 (0) 1795 521 733
Waterco (USA) Inc
Augusta, USA
Tel: +1 706 793 7291
Waterco Canada
Quebec, Canada
Tel: +1 450 796 1421
Waterco (NZ) Limited
Auckland, New Zealand
Tel: +64 9 525 7570

Waterco (GZ) Limited
Guangzhou, China
Tel: +86 20 3222 2180
Waterco (Far East) Sdn Bhd
Selangor, Malaysia
Tel: +60 3 6145 6000
PT Waterco Indonesia
Jakarta, Indonesia
Tel: +62 21 4585 1481

DISTRIBUTED BY:

WATERCO
Water, the liquid of life



ZZB1271 06/07

Micron Fibreglass Filters

Proven Strength and Durability



Micron fibreglass filters are known throughout the industry for their impressive performance and reliability. Manufactured from the highest grade of non corrosive materials and employing the latest in fibreglass winding technology, Micron fibreglass filters are designed and built for many years of trouble free operation.

- UV and corrosion resistant
- Hydraulically balanced lateral configurations
- Pressure rated at 250 kPa
- Top Mount, Side Mount and Deep Bed configurations.

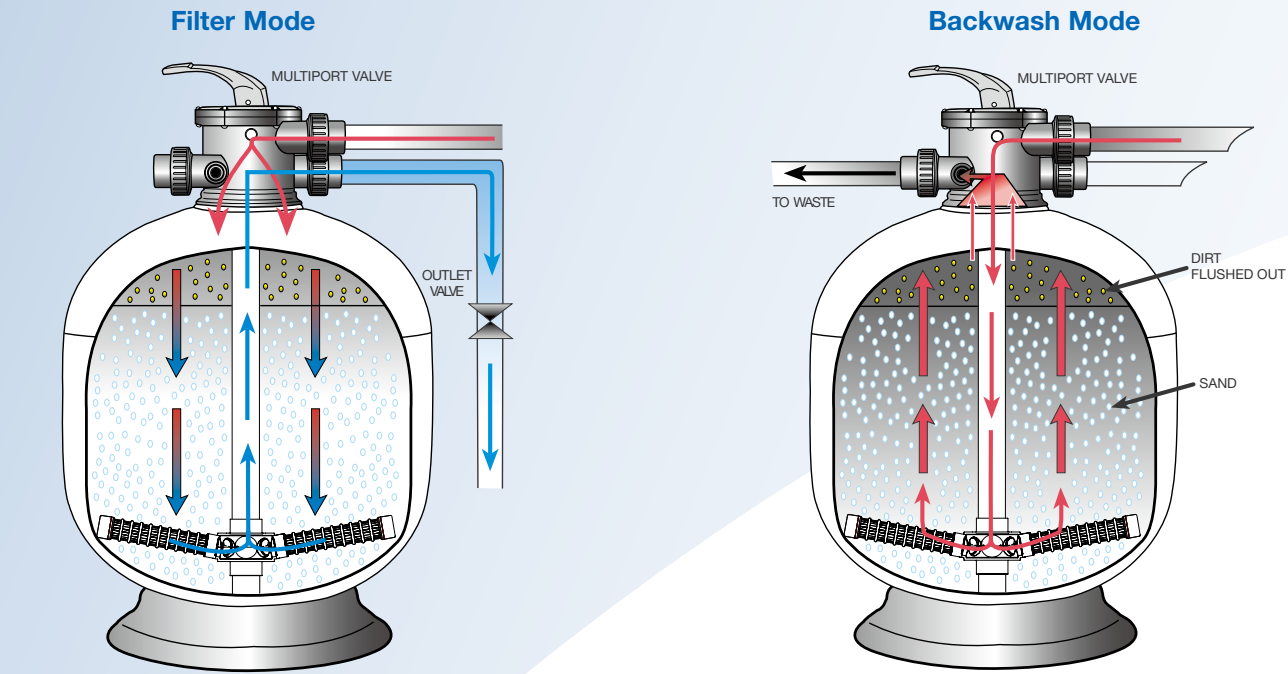
WATERCO
Water, the liquid of life

www.waterco.com

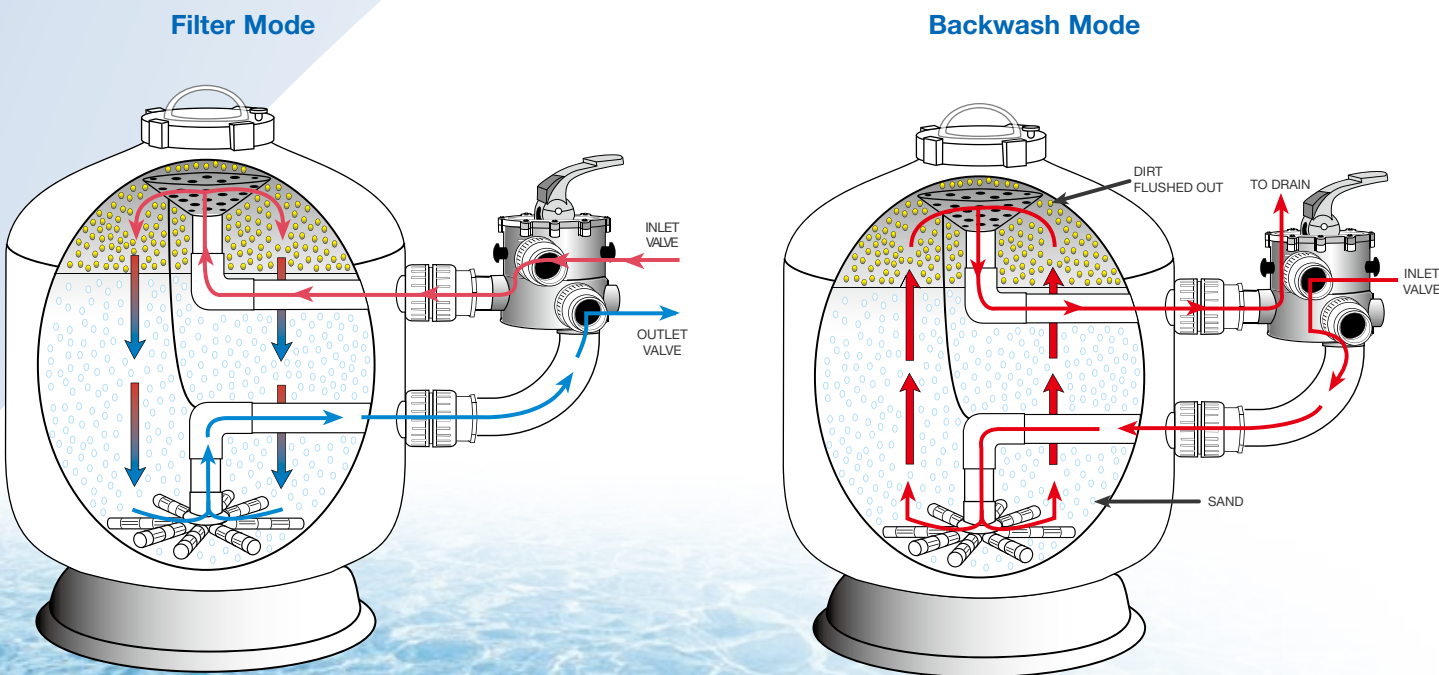
Micron Fibreglass Filters

Micron filters operate on the basis of “depth filtration”; dirt is driven through the filter bed and trapped in minute spaces between the particles of filter media. Cleansing the filter simply requires turning the filter’s Multiport lever from the “filter” position to the “backwash” position, which reverses the flow of water in the filter, flushing the filter bed.

Top Mount Configuration



Side Mount Configuration

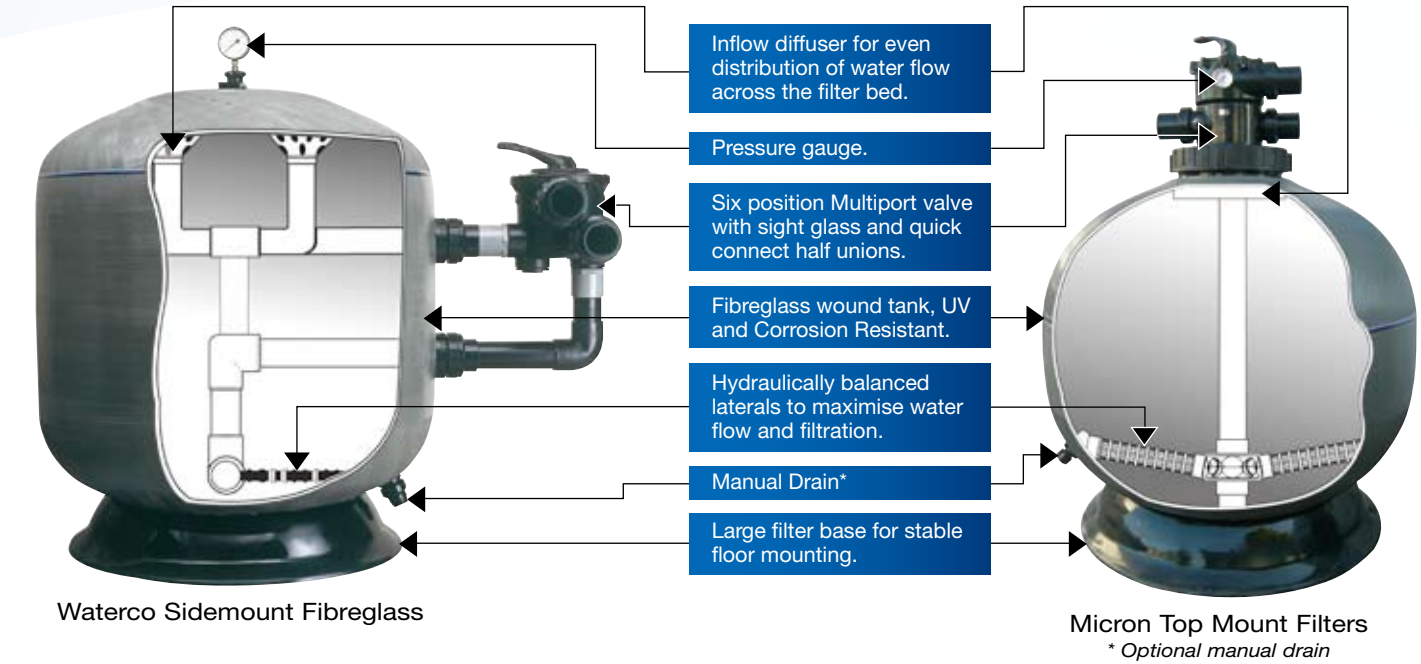


Filament Wound Filters

Micron fibreglass filters embody the latest in fibreglass winding technology. Micron fibreglass vessels consist of an inner shell of fiberglass reinforced polyester resin over wound with fibreglass filament. Waterco’s digitally controlled filament winding machine faultlessly winds continuous strands of fibreglass filament to create a filter vessel with refined consistency and superior quality.



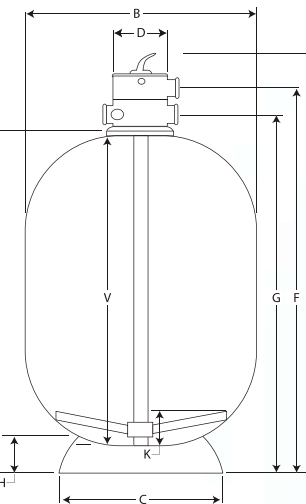
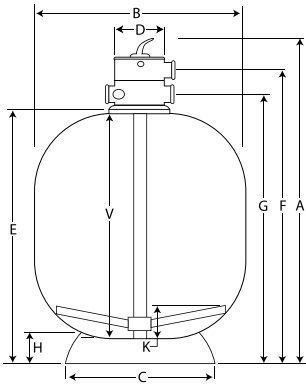
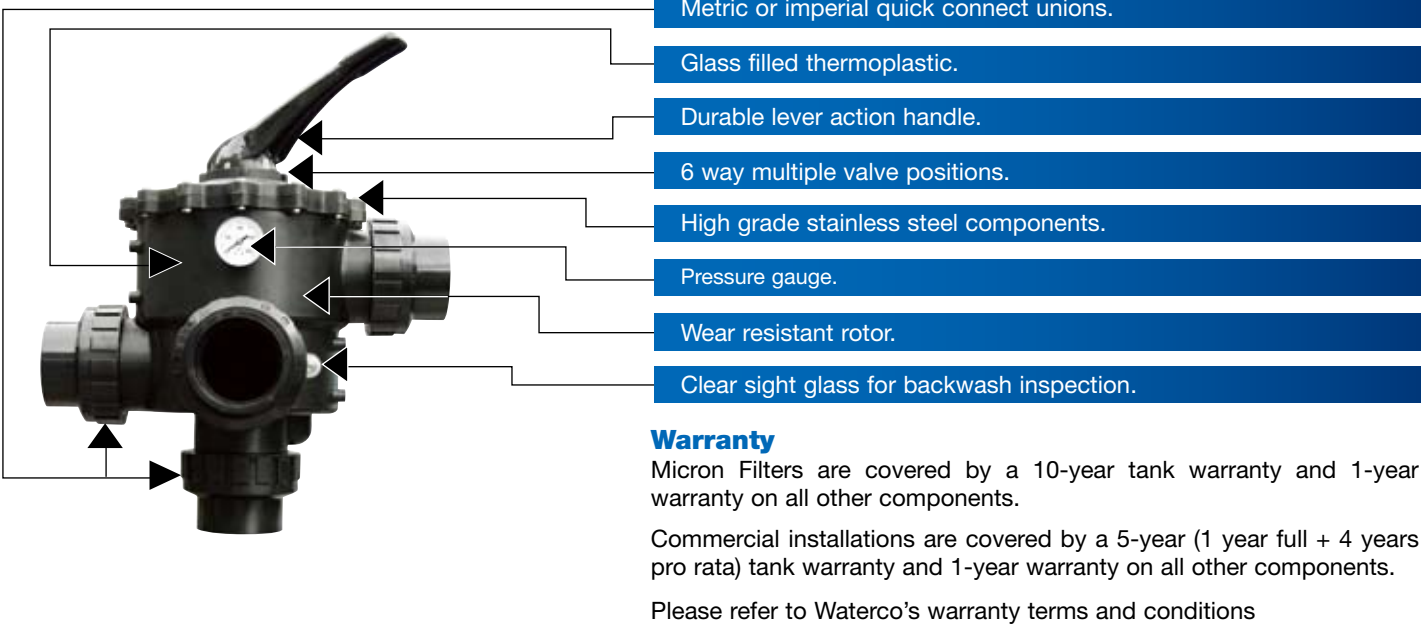
Waterco Micron Top and Sidemount Fibreglass Filters



- Working pressure 250 kPa (36 psi)
- Extra reinforcement to increase the working pressure rating to 400 kPa (58 psi) is available on request.
- Maximum working temperature of 50°C (122°F)

Waterco Multiport Valves

Constructed from heavy duty ABS, Waterco Multiport valves are designed for maximum performance and working pressures. Waterco Multiport valves are engineered to withstand a working pressure of up to 400 kPa (58 psi) with a test pressure of 600 kPa (87 psi).



Micron Top Mount Technical Specification

Filter Model	Valve Size (mm)	Inner Diameter (mm)	Filter Area (m²)	Bed Depth (mm)	Max. Flow (lpm)	Max. Pool Size** (litres)	Backwash flowrate (lpm)	Media Volume (litre)	Sand 16/30 (kg)	Zeoplus 1-2.2 (kg)
S500	40	500	0.20	280	157	56,500	131 - 147	62	90	70
S600	40	600	0.28	295	226	81,400	189 - 212	102	150	110
S700	40	700	0.38	330	308	110,800	257 - 289	148	220	160
S702	50	700	0.38	340	308	110,800	257 - 289	146	210	160
S750	50	750	0.44	340	353	127,200	295 - 331	167	240	180
S800	50	800	0.50	420	402	144,800	335 - 377	219	320	240
S900	50	900	0.64	420	509	183,200	424 - 477	302	440	330

Residential flow rate based on a velocity of 48m3/hr/m2. Max. pool size is based on a 6 hr turnover.

Micron Top Mount Dimension (mm)

Model	A	B	C	D	E	F	G	H	V	K
S500	864	505	443	180	625	731	672	69	525	94
S600	968	622	540	180	721	832	778	88	620	136
S700	932	723	620	180	692	801	743	90	650	139
S702	992	723	620	220	722	871	791	90	652	122
S750	1132	772	620	220	867	1014	932	90	773	127
S800	1077	810	620	220	807	956	875	90	713	111
S900	1158	910	620	220	892	1038	958	90	785	163

Micron Top Mount Deep Bed Filter

Micron Deep Bed Filters are designed with a guaranteed filter bed depth of 500mm, providing enhanced in-depth filtration and increased dirt capacity.

Micron Top Mount Deep Bed Technical Specification

Filter Model	Valve Size (mm)	Inner Diameter (mm)	Filter Area (m²)	Bed Depth (mm)	Max. Flow (lpm)	Max. Pool Size** (litres)	Backwash flowrate (lpm)	Media Volume (litre)	Sand 16/30 (kg)	Zeoplus 1-2.2 (kg)
SD400	40	400	0.13	500	101	36,400	84 - 94	70	100	80
SD500	40	500	0.20	500	157	56,500	131 - 147	108	160	120
SD600	40	600	0.28	500	226	81,400	189 - 212	162	240	180
SD750	50	750	0.44	500	353	127,100	295 - 331	248	360	270
SD900	50	900	0.64	500	509	183,200	424 - 477	379	550	420

Residential flow rate based on a velocity of 48m3/hr/m2. Max. pool size is based on a 6 hr turnover.

Micron Top Mount Deep Bed Dimension (mm)

Model	A	B	C	D	E	F	G	H	V	K
SD400	1135	405	356	180	899	1006	949	61	812	90
SD500	1135	505	443	180	895	1006	949	69	813	90
SD600	1135	624	540	180	897	1006	949	88	794	125
SD750	1235	776	678	220	970	1122	1041	120	838	125
SD900	1288	910	678	220	1022	1177	1094	120	880	172